

2005 DIPLOMAT®



MONACO®

DIPLOMAT®

2005



MONACO®

DRIVING YOUR DREAM.™

The 2005 Diplomat

Introducing the 2005 edition of the Diplomat. This popular diesel coach has proven itself to be the perfect combination of luxury and value. And this year is no different. It all begins with the powerful new Cummins® 400 HP ISL engine coupled with the custom-built Roadmaster Raised Rail RR8R-Series chassis, for the very best ride and handling in its class. The coach also features a new Onan® 8.0 kW Quiet Diesel generator as well as new streamlined side-hinged baggage doors for easier packing. So climb aboard. A whole new experience is waiting for you.

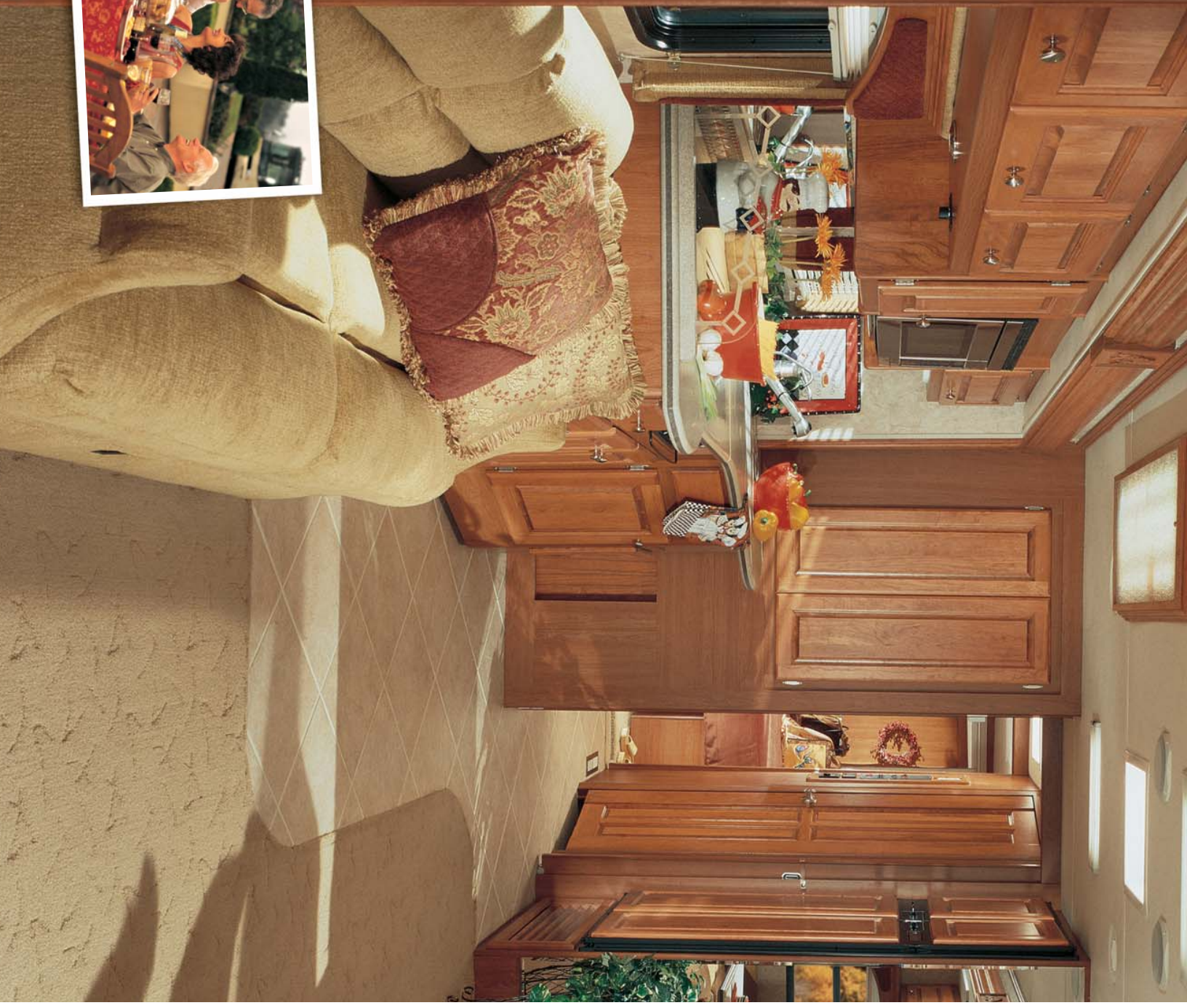
DRIVING YOUR DREAM.

Dreams. They're the way we write the story of our lives. Some are serious. Like raising kids or building a business. Others are pure fun. Like the dream you have early on a summer morning, sipping coffee and working on your life's next chapter. It's about making big plans and changing them on a whim. Or even better, following your heart without any plans at all. Yes, it's the dream of a lifetime. And with Monaco's legendary quality, reliability and innovation, we can make it all come true.



MONACO

DRIVING YOUR DREAM.™



Diplomat interior

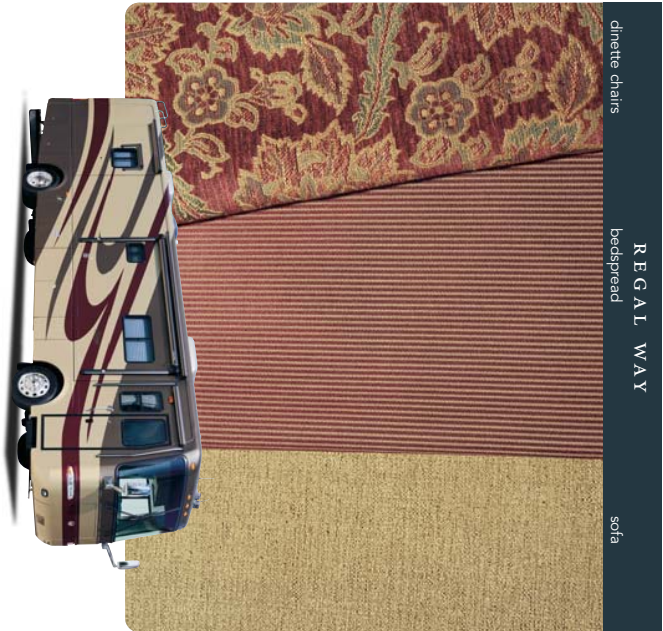
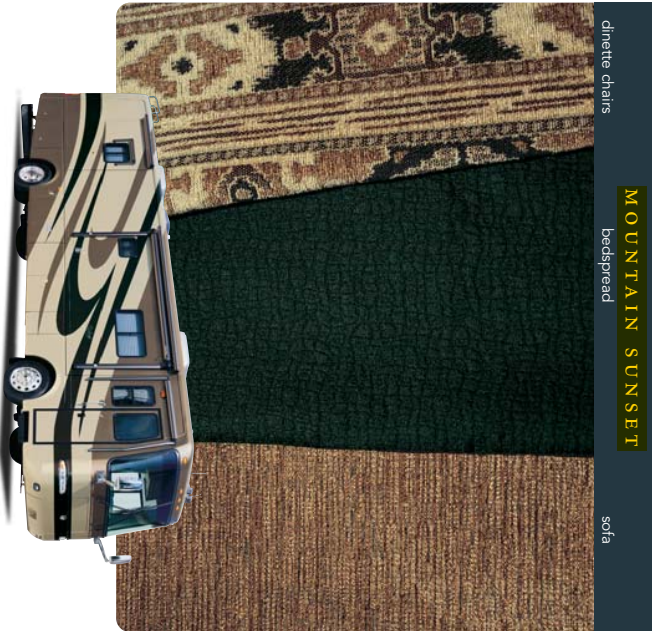
This year, the Diplomat takes spaciousness to new levels — thanks to three added inches of ceiling height. As you look through the living area, you'll also notice a more residential feel than ever before, with many stylish details. You'll love the woodwork, with hardwood cabinet doors, end panels and refrigerator inserts, as well as crown molding, decorative hardwood slide-out fascia and decorative hardwood/fabric window boxes. You'll also enjoy the beautiful furnishings, in richly patterned fabrics and optional plush Ultraleather™, which is specially designed for the demands of life on the road.



Major front to back, 38PDQ, Autumn Cherry, Regal Way.

Exterior colors, fabrics & woods

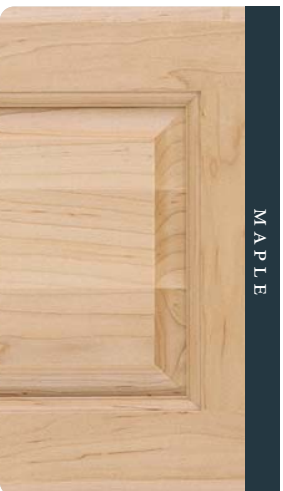
Each year, our designers create color and fabric combinations that lead the industry in warmth and style. This year, we're offering four beautiful decors and three stunning cabinet finishes.



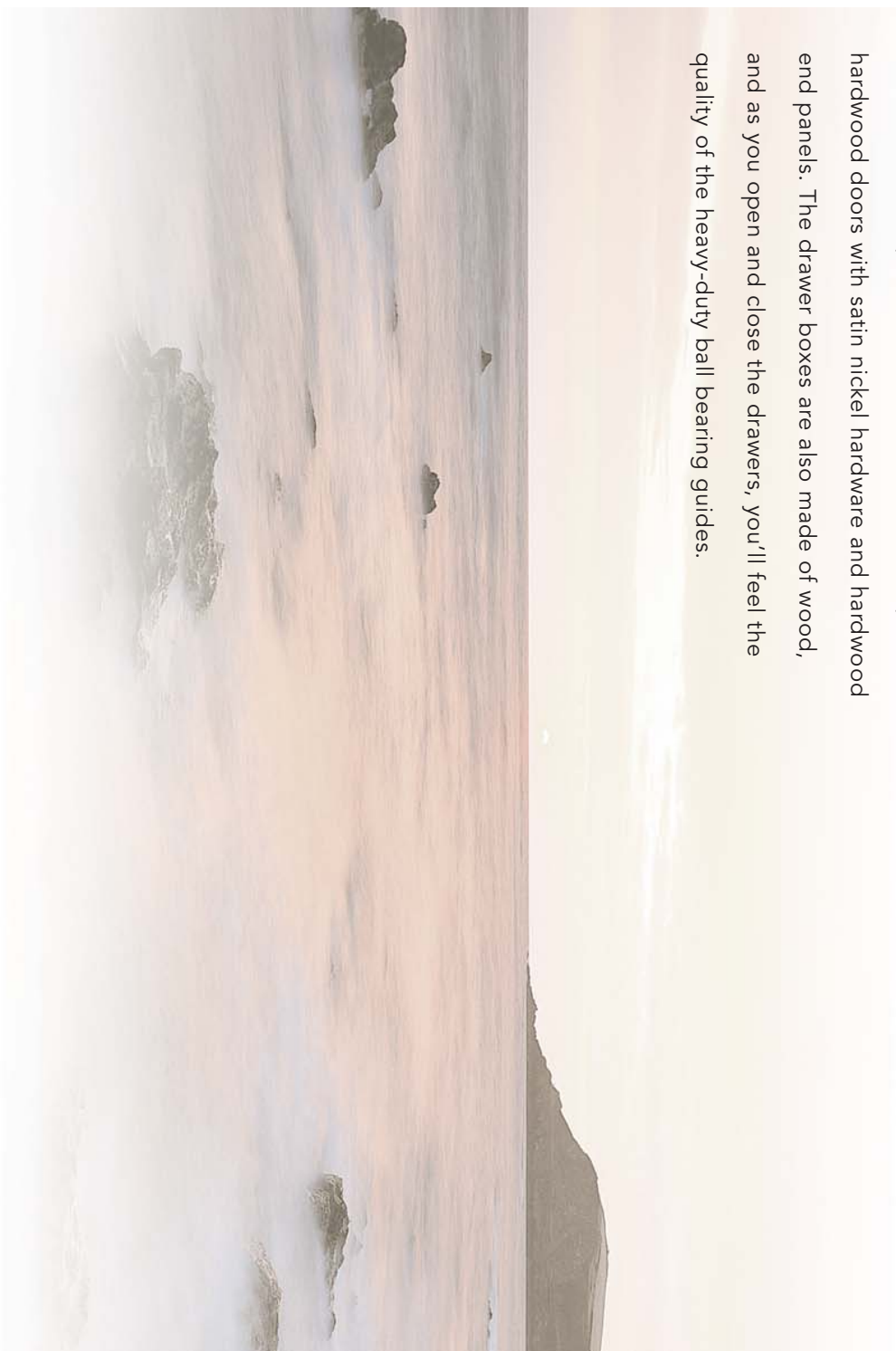
Manufactured in, not added on. For added protection against stains, Dupont Teflon® soil repellent is applied to virtually all upholstery fabric during the finishing process for superior coverage.*

*Brand and application of upholstery fabric protection may vary depending on date recreational vehicle was manufactured.

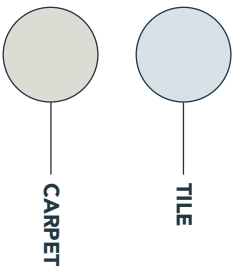
Note: Colors depicted are a reasonable representation though they may not be an exact match of the actual colors due to variances in processing and production. See your dealer for actual fabric and paint chip samples.



As you choose your favorite style of woodwork, you can be confident that each selection is crafted to the highest standards. The Diplomat's cabinets feature raised panel hardwood doors with satin nickel hardware and hardwood end panels. The drawer boxes are also made of wood, and as you open and close the drawers, you'll feel the quality of the heavy-duty ball bearing guides.

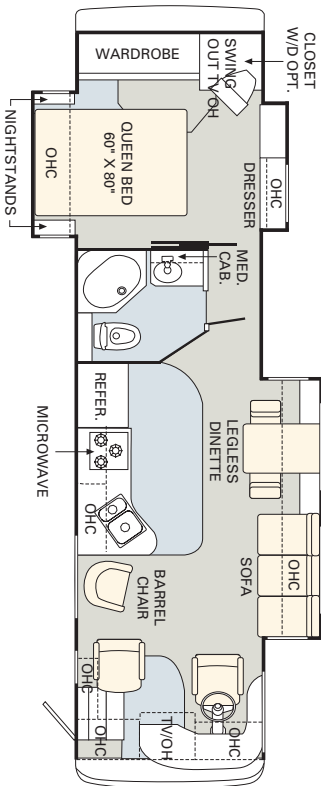


No other manufacturer gives you as many innovative floorplan choices as Monaco. The 2005 Diplomat offers double, triple and quad slide-out models in lengths that range from 36' to 40'.

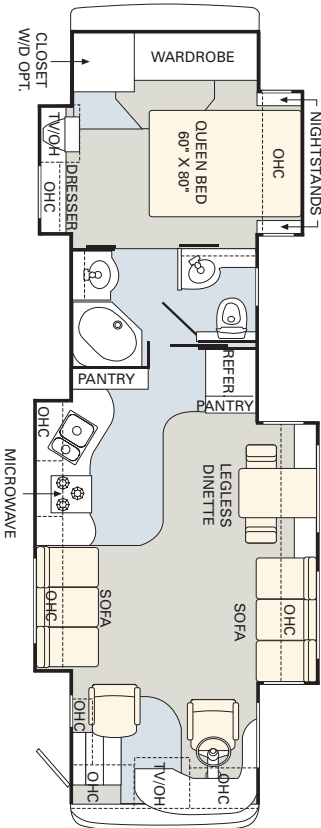


Find all the latest product news and updates online: monacocoach.com

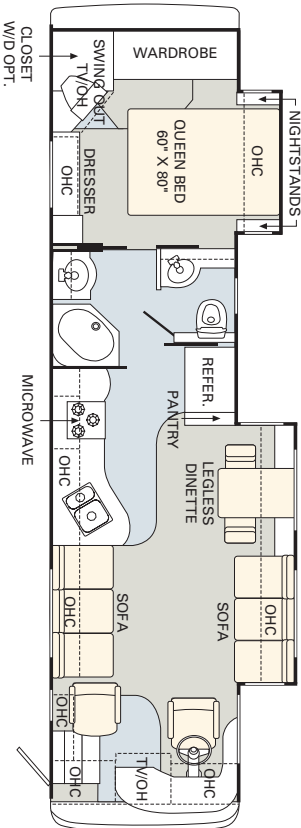
36SKT



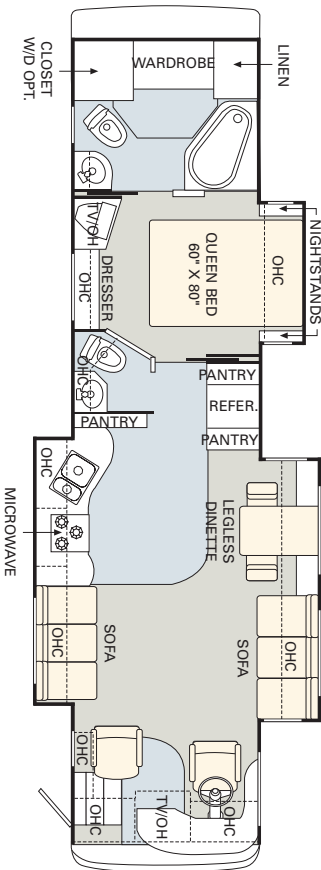
38PDQ



38PDD



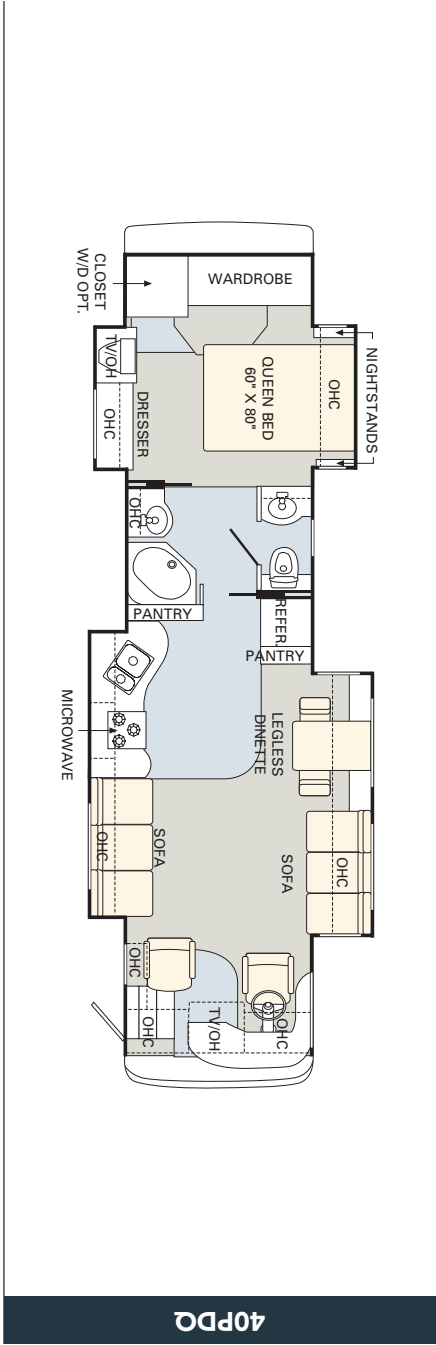
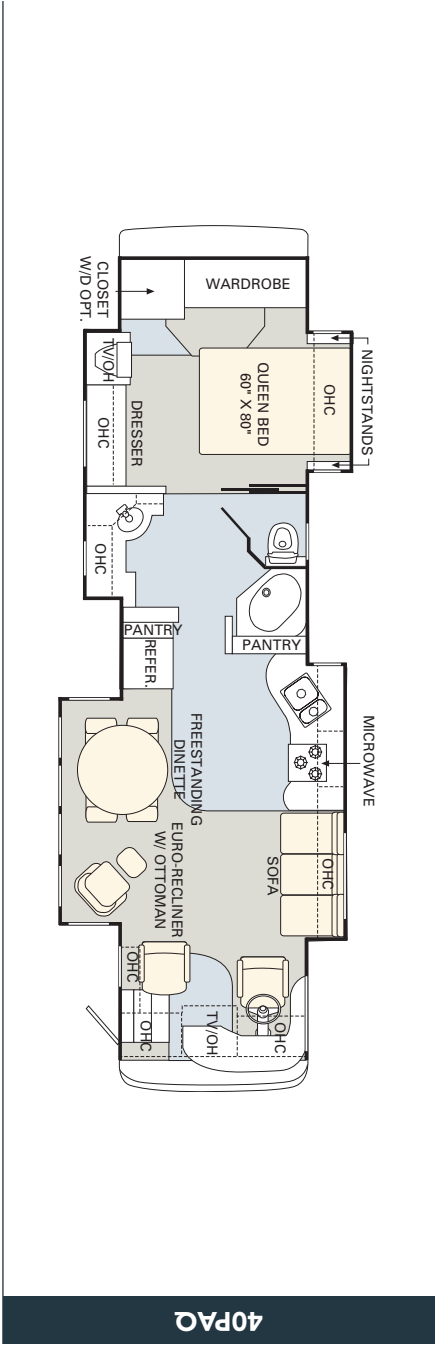
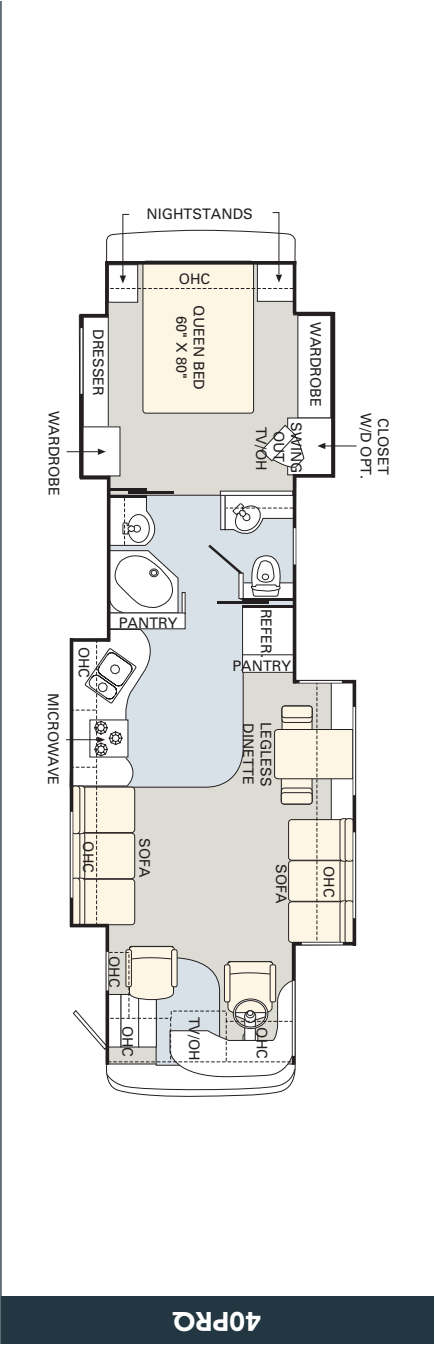
40DST



FURNITURE OPTIONS

Monaco gives you more ways to customize your motorhome to fit your lifestyle. Here are some furniture options you may wish to consider. (Please see page 19 for a full list of the options available on each floorplan.)

- Hide-A-Bed Sofa
- Easy Bed Sofa
- Wraparound Computer Desk
- Magic Bed Sofa
- J-Lounge with Drawer
- Recliner
- Adjustable Coffee Table
- Booth Dinette



05 specifications and standards & options

	WEIGHT RATINGS (LBS.)				MEASUREMENTS						TANK CAPACITY (GAL.) ²					
	Gross vehicle	Gross combined ¹	Front gross axle	Rear gross axle	Wheelbase	Overall length	Overall height (with A/C) (add 5" for satellite option)	Interior height	Interior width	Exterior width	Water heater	Gray tank	Black tank	Fresh tank	LP tank ³	Fuel tank
36SKT	33,000	43,000	13,000	20,000	216"	37' 2"	12' 3"	81"	94½"	100½"	10	62	40	100	39	100
38PDD	33,000	43,000	13,000	20,000	242"	39' 4"	12' 3"	81"	94½"	100½"	10	62	40	100	39	100
38PDD	33,000	43,000	13,000	20,000	242"	39' 4"	12' 3"	81"	94½"	100½"	10	62	40	100	39	100
40DST	33,000	43,000	13,000	20,000	256"	40' 6"	12' 3"	81"	94½"	100½"	10	62	40	100	39	100
40PRO	33,000	43,000	13,000	20,000	256"	40' 6"	12' 3"	81"	94½"	100½"	10	62	40	100	39	100
40PAQ	33,000	43,000	13,000	20,000	256"	40' 6"	12' 3"	81"	94½"	100½"	10	62	40	100	39	100
40PDD	33,000	43,000	13,000	20,000	256"	40' 6"	12' 3"	81"	94½"	100½"	10	62	40	100	39	100

¹ Towing capacity is limited by GCWR; your vehicle's towing capacity is the difference between the GCWR and the actual vehicle weight, including all water, fuel, passengers and cargo. Your towed vehicle should be equipped with auxiliary brakes if the weight of the towed vehicle exceeds 1,000 lbs. Consult your owner's manual for further towing information.

² Variances in the fabrication and installation of the tanks may cause the actual "usable capacity" to be greater or less than the capacities designated above.

³ Actual filled LP capacity is 80% of listing due to safety shut-off required on tank.

⁴ The actual overall length of the recreational vehicle may differ from that indicated in the brochure due to variances in the manufacturing process and/or installed components. The actual length may be greater or less than that indicated. Due to the large variety of options and floorplan arrangements available to our customers, actual weights for each unit can differ significantly. Monaco Coach provides a weight sticker on each unit we produce which includes that unit's tank capacities and approximate weight. Consult your local Monaco Coach dealer for unit availability and further information. The information printed in this brochure reflects product design, fabrication, and component parts at the date of printing. The manufacturer reserves the right, at any time, to make changes in product design or material or component specifications as its sole option, without notice. This includes the substitution of components of a different brand or trade name which will result in comparable performance. All information printed in this brochure is subject to change after the date of printing. Some features shown or mentioned in this brochure are optional and may only be available in selected floorplans. Photographs may show props or decorations that are not standard equipment on Monaco Coach models. Monaco Coach, the Monaco logo and its design, are registered trademarks. All other products and company names are trademarks and/or registered trademarks of their respective holders. While the color of the motorhome's exterior and the interior fabrics depicted in this sales brochure are fair and reasonable depictions, the colors depicted may not be an exact match of the actual colors because of the variances in photo-processing and variances caused by inserting the photographs within the sales brochure. Due to product improvements, changes during the model year and/or transcription errors that may occur, information represented within this brochure may not be accurate at the time of your purchase. If certain information is significant to your purchasing decision, please confirm the information with your dealer prior to submitting your order. Component part and appliance manufacturers issue limited warranties covering those portions of the recreational vehicle not covered by the Limited Warranties issued by the Monaco Coach Corporation companies. To learn more on what specific component parts and appliances are excluded from the Limited Warranties issued by the Monaco Coach Corporation please contact your selling dealership or Monaco Coach Corporation directly or review the warranty packet inside the recreational vehicle.

BODY CONSTRUCTION			
	Alumaframe® Superstructure Steel Cage Cockpit Construction Peaked Aluminum Roof with Fiberglass Insulation Smooth Gel Coat Fiberglass Exterior Walls Front Molded Fiberglass Cap Rear Molded Fiberglass Cap with Integrated Air Intake One-Piece Generator Access Door Rear Engine Door Struts Angled Fiberglass Engine Cover Steel Framed Floor on Steel Trusses Laminated Structurwood™ Flooring Electric Flush Floor Stepwell Cover Interior Paneling with 3/4" Insulation Foam Insulated Floor Framing with Luau Backer Power Heated Remote Exterior Mirrors Headlamp with Turn Signal Fog Lights Flush Mount Metal Fuel Doors Side-Hinged Baggage Doors, Storage Compartments Only One-Piece Polyethylene Pass-Through Storage Compartment Wheel Mud Flaps Deluxe Full-Body Paint Monaco Dot to Front and Rear Caps Chrome Letter Decals Interior Entry Step Storage Roof Ladder Undercoating		
	O P T I O N S Storage Bay Slide-Out Tray 17.5" Chrome Power Heated Mirror with Turn Signal Full-Length Mud Flap Slide-Out Battery Tray 3M® Film Front Mask		
CHASSIS/ENGINE/SUSPENSION			
	Roadmaster Raised Rail RR8R-Series Chassis Aluminum Rear-Mounted Radiator with CAC Cooler Dual Fuel Fill 160 Amp Alternator Rear Axle Ratio: 4.30:1 Goodyear Radial Tires 275/70R22.5 G670RV Stainless Steel Wheel Liners Cushion Air Glide Suspension with Eight Outboard Mounted Air Bags and Eight Monroe Shock Absorbers Anti-Lock Braking System with Full Air Brakes (Drum) Automatic Traction Control Exhaust Braking System Auto Slack Adjusters on Brakes Transmission Temperature Gauge Air Cleaner Restriction Gauge Engine Block Heater Fuel and Water Separator Remote Transmission Fill Rock Shield to Radiator 10,000 Lb. Hitch Receiver with Seven-Point Connector RVA Manual Hydraulic Leveling Jacks		
	O P T I O N S Cummins® 400 HP ISL Engine with Allison® 3000 MH 6-Speed World Transmission and Electronic Shifter (Forced Option) Engine Displacement 8.9L/540 Cu. In. Torque: 1,200 lbs./ft. Max. Net at 1,300 RPM Polished Aluminum Wheels		
COCKPIT			
	Automotive Dash with Aztec Pewter Instrumentation Panel Dash 12V Chassis Battery Gauge CD Player/Radio with Six Speakers Power Sunvisors Pleated Front Privacy Drape with Braided Tie Backs Wood Framed Cabinet Doors with Smoked Glass over Front Entertainment Center Systems Adjustable Brake and Accelerator Pedals 110V, 12V and Phone Outlet Color Rear Vision System Lighted VIP Smartwheel® with Controls for Windshield Wipers, ICC and Cruise Control Intermittent Windshield Wipers 6-Quart Tank for Windshield Fluid with Fluid Sensor to Tank and "Low Wash" Indicator on Dash Audible Turn Signals Roof-Mounted Air Horn Two-Tier Cup Holder Center Console and Driver/Passenger Side Console CB Prep Ultraleather™ Pilot and Co-Pilot Seat with 6-Way Power Pilot Seat Power Steering Directional Map Lights on Bottom of Front TV Cabinet Color-Coordinated Carpeted Floor Mats		
	O P T I O N S Ultraleather™ Six-Way Power Co-Pilot Seat Ultraleather™ Six-Way Co-Pilot Seat with Power Footrest Ultraleather™ Extra Wide Co-Pilot Seat with Power Footrest Pilot and Co-Pilot Pull-Down Sunshades 10-Disc CD Changer Dash Fans		

APPLIANCES & ACCESSORIES	
<p>Large Double-Door Refrigerator</p> <p>High-Output Three-Burner Cooktop without Oven</p> <p>Removable Solid Surface Range Covers</p> <p>Spacesaver Convection Microwave</p> <p>24" Flatscreen CRT Color Stereo TV with Remote Control in Living Area</p> <p>Living Area Stereo TV Wired through Ceiling Speakers</p> <p>20" Flatscreen CRT Color Stereo TV with Remote in Bedroom Area</p> <p>TV Antenna with Jacks</p> <p>VCR Prep and Video Control Box with Booster</p> <p>Exterior Hook-Ups for DSS Dish and Cable (N/A: 40PAQ)</p> <p>Digital Satellite System Prep</p> <p>Interior Cable TV Hook-Up and Telephone Jacks</p> <p>VCR or DVD Player Options to be Wired to Both TV Locations</p> <p>Washer/Dryer Prep</p>	
INTERIOR	
<p>Vintage Oak Cabinetry</p> <p>Raised Panel Hardwood Cabinet Doors</p> <p>Hardwood Cabinet End Panels</p> <p>Refrigerator Raised Panel Hardwood Inserts</p> <p>Decorative Wallboard</p> <p>Wallpaper Border in Private Bath</p> <p>Self-Supporting Top-Hinged Overhead Storage Doors and Positive Catches on All Other Doors</p> <p>Heavy-Duty Ball Bearing Drawer Guides</p> <p>Wood Cabinet Drawer Boxes</p> <p>Crown Molding in Bedroom and Living Area</p> <p>Metal Interior Grab Handle on Dash at Entry Door</p> <p>Satin Nickel Cabinetry Hardware and Bath Accessories</p> <p>Polished Radius Solid Surface Kitchen Countertop with Stainless Steel Sink with Two Sink Covers</p> <p>Silverware Drawer with Organizer</p> <p>in Kitchen Base Cabinets (N/A: 36SKT)</p> <p>Tip-Out Tray under Kitchen Sink</p> <p>Solid Surface Backsplash with Decorative Inlay and Beveled Mirrors in Kitchen Gallery</p> <p>Solid Surface Bathroom Countertop with Integrated Sink and Decorative Mirror Backsplash</p> <p>Solid Surface Dinette and Nightstand Tops</p> <p>Kitchen Overhead Cabinet with Adjustable Shelf</p> <p>Roll-Out Pantry next to Two-Door Refrigerator (N/A with Four-Door Refrigerator)</p>	<p>Wastebasket Storage</p> <p>Sink and Stove Top Cover Storage Area inside Kitchen Base Cabinet</p> <p>Ceramic Tile in Kitchen and Bath</p> <p>Ceramic Tile in Front of Washer/Dryer Area</p> <p>Designer Carpeting in Living Area and Bedroom</p> <p>Soft Touch Padded Vinyl Ceiling</p> <p>Hardwood Slide-Out Fascia</p> <p>with Decorative Center Block</p> <p>Decorative Hardwood/Fabric Window Boxes throughout Coach</p> <p>Hardwood Headboard with Raised Panel Inserts</p> <p>Medicine Cabinet with Two Adjustable Shelves</p> <p>Towel Bars in Bathroom</p> <p>Oversized Rear Closet Wardrobe with Deluxe Decorative Mirror Doors and Frames in Satin Nickel</p> <p>Bedroom Dresser with Solid Surface Countertop</p> <p>Accent Mirror on Refrigerator Wall (N/A: 36SKT)</p> <p>Decorative Picture on Kitchen Wall (36SKT)</p> <p>Bathroom Lavatory Mirror</p> <p>Two Towel Rings in Bathroom</p> <p>Blackout Day/Night Pleated Shades in Living Area and Bedroom</p> <p>Mini Blinds in Kitchen and Bath</p> <p>Soil Repellant on Fabric, Teflon® Fabric Protection</p>
OPTIONS	
<p>Large Four-Door Refrigerator with Ice Maker (N/A with Pantry)</p> <p>High-Output Three-Burner Range with Oven</p> <p>Stainless Steel Microwave</p> <p>Combination Washer/Dryer</p> <p>DVD Player</p> <p>VCR</p> <p>Home Theater System with DVD/VCR Player</p> <p>26" Flatscreen LCD TV in Living Area</p> <p>Exterior Entertainment Center without Label on Door (N/A: 40PAQ)</p> <p>Fully Automatic Digital Satellite System</p>	<p>OPTIONS</p> <p>New Decors: Regal Way, Rustica, Murano Green, Mountain Sunset</p> <p>Wood Choice: Autumn Cherry and Maple</p> <p>Entry Floor to Match Kitchen</p> <p>Laminate Plank Flooring Kitchen and Bathroom and in Front of Washer/Dryer Area</p> <p>Solid Surface Kitchen Sink</p>

FURNITURE		ELECTRICAL SYSTEMS & LIGHTS		PLUMBING & LP SYSTEMS	
<p>Legless Dinette Table with Two Chairs and Two Folding Chairs</p> <p>Roadside Furniture: Fabric Easy Bed Sofa</p> <p>Curbside Furniture: Fabric Barrel Chair (36SKT, 40PAQ)</p> <p>Curbside Furniture: Fabric Easy Bed Sofa (N/A: 36SKT, 40PAQ)</p> <p>Queen Bed (60" X 80") with Solid Surface Nightstands</p>		<p>50 Amp 12V Distribution Panel and Power Cord</p> <p>Onan® 8.0 kW Quiet Diesel Generator on Manual Slide-Out</p> <p>Four 6V Deep Cycle Batteries</p> <p>Two 12V Heavy-Duty Chassis Batteries</p> <p>Battery Disconnect Switch at Front Door</p> <p>Battery Boost Switch in Cockpit</p> <p>2,000 Watt Inverter</p> <p>Recessed Docking Lights</p> <p>Porch Light and Exterior Step Light on Same Switch</p> <p>Lighted Interior Steps</p> <p>Lights in Outside Storage Compartments with Switch on Passenger Console and Utility Bay</p> <p>110V Outlets in Outside Storage Compartment</p> <p>Underhood Utility Light</p> <p>Systems Control Center in Hallway</p> <p>Fluorescent Light(s) under Kitchen Overhead</p> <p>Fluorescent Ceiling Lights Throughout</p> <p>Decorative Lighting Satin Nickel with Swirled Glass</p> <p>Fluorescent Ceiling Lights inside Living Area</p> <p>Slide-Out House</p> <p>Decorative Framed Longer Galley Fluorescent Ceiling Light</p> <p>Halogen Lights with Dimmer Control under Living Room, Dining Room, Bed Overhead and Bedroom</p> <p>Dresser Overhead Cabinets</p>		<p>Demand Water System and Water Pump</p> <p>10 Gallon LP Gas/Electric Water Heater with Electronic Ignition DSI Water Heater Located below Floor</p> <p>Single Lever Kitchen Faucet with Pullout Sprayer</p> <p>Separate Brushed Satin Faucet for Filtered Water</p> <p>Satin Nickel Bathroom Faucet</p> <p>Satin Nickel Shower Faucet</p> <p>Water Heater Bypass Valve</p> <p>Water Pump Switch in Hall Systems Panel Center</p> <p>Private Bathroom Lavatory and Service Bay Area</p> <p>Theftord China Toilet</p> <p>Theftord China Toilet Electronic Theftord Silent Plus (40DST Only)</p> <p>Shower inside Wet Bay with Hot/Cold Water</p> <p>No-Fuss Flush Holding Tank Rinsing System</p> <p>Gravity and Pressurized Water Fill</p> <p>Insulated Systems Compartment with Easy Access to Hook-Ups</p> <p>Soap Dispenser inside Utility Bay</p> <p>One-Piece Fiberglass Shower (N/A: 40DST)</p> <p>Bathtub (40DST)</p> <p>Satin Aluminum Shower Door Frame with Decorative Glass</p>	
<p>O P T I O N S</p> <p>Roadside Furniture: Fabric Hide-A-Bed Sofa with Air Mattress</p> <p>Roadside Furniture: Ultraleather™ Hide-A-Bed Sofa with Air Mattress</p> <p>Roadside Furniture: Fabric Magic Bed Sofa</p> <p>Roadside Furniture: Ultraleather™ Magic Bed Sofa</p> <p>Roadside Furniture: Ultraleather™ Easy Bed Sofa</p> <p>Roadside Furniture: Ultraleather™ Magic Bed Sofa</p> <p>Roadside Wraparound Computer Desk with Euro-Recliner with Ottoman (N/A: 36SKT, 40DST, 40PAQ)</p> <p>Curbside Furniture: Fabric Hide-A-Bed Sofa with Air Mattress (N/A: 36SKT, 40DST, 40PAQ)</p> <p>Curbside Furniture: Ultraleather™ Hide-A-Bed Sofa with Air Mattress (N/A: 36SKT, 40DST, 40PAQ)</p> <p>Curbside Furniture: Fabric Magic Bed Sofa (N/A: 36SKT, 40DST, 40PAQ)</p> <p>Curbside Furniture: Ultraleather™ Magic Bed Sofa (N/A: 36SKT, 40DST, 40PAQ)</p> <p>Curbside Furniture: Ultraleather™ Easy Bed Sofa (N/A: 36SKT, 40DST, 40PAQ)</p> <p>Curbside Furniture: Ultraleather™ J-Lounge with Drawer (N/A: 36SKT, 40PAQ)</p> <p>Curbside: Fabric Recliner (36SKT, 38PDD, 40PAQ)</p> <p>Curbside: Ultraleather™ Recliner (36SKT, 38PDD, 40PAQ)</p> <p>Curbside: Ultraleather™ Euro-Recliner with Ottoman (36SKT, 38PDD, 40PAQ)</p> <p>Adjustable Coffee Table</p> <p>Pillow Top Mattress</p> <p>Booth Dinette (N/A: 40PAQ)</p>		<p>O P T I O N S</p> <p>Energy Management System</p> <p>Auto Generator Start</p> <p>Solar Panel</p> <p>Power Cord Reel</p>		<p>O P T I O N S</p> <p>RV Sani-Con Tank Drainage System</p> <p>Electric Automatic Winterization</p> <p>Power Water Hose Reel</p> <p>Bathtub (Standard on 40DST)</p>	

HEATING, VENTS & AIR CONDITIONING		
<p>Dual 13.5M BTU Roof Air Conditioner with Ducted Air, Heat Pumps and Digital Thermostat Control</p> <p>Electronic Ignition Furnace - One 40M BTU (36SKT, 38PDD)</p> <p>Dual Zone Electronic Ignition Furnaces - Two 25M BTU (N/A: 36SKT, 38PDD)</p> <p>Electronic Dash AC/Heat Climate Control System</p> <p>In-Floor Ducted Heating System</p> <p>12V Fantastic Attic Fan in Kitchen with Wall Thermostat</p> <p>12V Roof Vents in Bath Hall (N/A: 36SKT)</p> <p>12V Roof Vents in Private Bath</p> <p>Metal Floor Registers Satin Nickel</p>		
<p>OPTIONS</p> <p>12V Fantastic Attic Fan in Lavatory</p> <p>Attic Fan with Rain Sensor Kitchen</p> <p>Attic Fan with Rain Sensor Lavatory</p>		
WINDOWS, DOORS & AWNINGS		
<p>Radius Flush Mount Dual Pane Safety Glass Dark Tinted Windows</p> <p>Front Entry Door with Removable Screen and Anti-Skid Steps</p> <p>Exterior Entry Door Grab Handle</p> <p>Metal Interior Grab Handle on Dash at Entry Door</p> <p>Color-Coordinated Acrylic Patio Awning</p> <p>Topper Slide-Out Awnings Living Area and Bedroom</p> <p>Front Door Awning</p> <p>Tinted Skylight in Bathroom with Protecta Glaze</p> <p>Window Awnings on All Slide-Out House Windows except Kitchen Window and Slide-Out Windows under Patio Awning</p>	<p>OPTIONS</p> <p>Eclipse Automatic Patio Awning</p> <p>Bedroom Window Awning on Sidewall (36SKT, 38PDD, 40DST, 40PRO)</p> <p>Keyless Entry (Front Door Only)</p>	
SAFETY		
<p>Fire Extinguisher</p> <p>Deadbolt Lock on Entrance Door</p> <p>120V GFI Protected Circuit</p> <p>LP Gas Detector</p> <p>Smoke Detector</p> <p>Carbon Monoxide Detector</p> <p>Driver and Passenger Three-Point Seat Belts</p> <p>Third Brake Safety Light</p> <p>Egress Window(s)</p>		